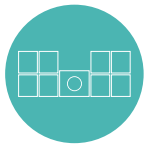


Esco Multi-Zone Workstation with MIRI® Chambers

Provides superior condition for stable IVF preparation
The workstation is now even better with its integrated MIRI® chambers to further secure your embryos while inside the workstation. The MIRI® incubator is popular for its top-notch features such as stable culture environment and faster parameter recovery.

Key Features



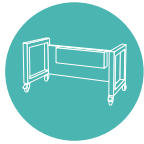
Multi-Zone Heating System

The independent zones have its own heating elements and sensors.



MIRI® Chambers

Your specimens are more secured than ever with the integrated MIRI® chambers, known for its stable and precise temperature output.



Support Stand Options

More options to choose from to meet your requirements.



Non-radiating Stainless Steel Tabletop

The main material used in the tabletop surface is stainless steel. while aluminum is used for covering the bottom of the tabletop.



Fit in the same MIRI® Inserts



Nunc™



Falcon®



Vitrolife



LifeGlobal®
GPS Dishes



Nipro™



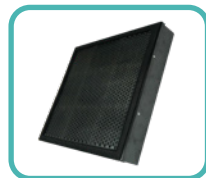
SparMED Oosafe®

Optional Accessories

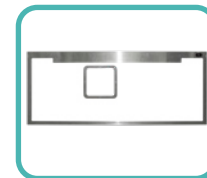


Support Stand:

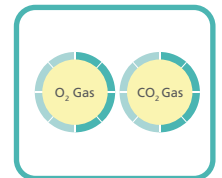
- With leveling feet
- With Caster Wheels
- Motorized stand with Caster Wheels



Carbon Filter



UV Kit



Gas Mixer for
MAW



Want to know more about this product? Scan the QR Code

Esco Micro Pte. Ltd.

21 Changi South Street 1 • Singapore 486 777 • Tel +65 6542 0833
medical@escolifesciences.com • esco-medical.com

Esco Global Offices: Bangladesh | China | Denmark | Germany | Hong Kong | Indonesia | Lithuania | Malaysia | Myanmar | Philippines | Russia | Singapore | South Africa | South Korea | Taiwan | Thailand | UAE | UK | USA | Vietnam