

Aeris™ Conventional PCR Thermal Cycler

Best solution for your DNA amplification needs

Esco offers a choice of Conventional Thermal Cycler and Real Time Thermal Cycler models designed to meet critical requirements for preimplantation genetic diagnosis (PGD). PGD using the PCR method requires the accurate amplification of chromosomal abnormalities and genetic defects. The Swift thermal cyclers use state of the art Peltier temperature control technology to achieve and maintain precise control and fast ramp rates with minimal over or under-shoot for process speed and accuracy.



Key Features



Humanistic Design

- The Peltier module, electronics, and sensors are precision tuned and tested to ensure the longest operating lifespan possible.
- Pre-programmed methods provide easy choice.
- Multiblock capability with automatic block recognition software minimizes the need for manual settings.



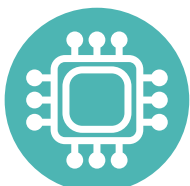
Flexibility

- Adjustable hot lid temperature and ramp rate.
- It can be used for degenerate oligonucleotide primed PCR (DOP-PCR) for Whole Genome Amplification (WGA) workflow.



Highly efficient

- Best uniformity ($\leq 0.2^{\circ}\text{C}$) and accuracy ($\leq 0.1^{\circ}\text{C}$) ensure reliability and excellent performance.
- With the intuitive color touch screen, program setting becomes easier and faster with available functions to define different applications.



Great Performance

Allows running of 'Long PCR,' a new technique that applies to amplification of PCR. It is also able to run 'Nested PCR,' which allows users to have two pairs of PCR primers to reduce the contamination in products due to the amplification of unexpected primer binding sites.



User-Friendly

- Three language choices (English, Chinese and Spanish) on the control system for ease of use by operators worldwide.
- Adjustable backlight for operator comfort, making it suitable for different working environments.



Want to know more about this product? Scan the QR Code

Esco Micro Pte. Ltd.

21 Changi South Street 1 • Singapore 486 777 • Tel +65 6542 0833 • Fax +65 6542 6920
medical@escoglobal.com • esco-medical.com

Esco Global Offices: Bangladesh | China | Denmark | Germany | Hong Kong | Indonesia | Italy | Lithuania | Malaysia | Myanmar | Philippines | Russia | Singapore | South Africa | South Korea | Taiwan | Thailand | UAE | UK | USA | Vietnam